

Introducing **ERGO** ANALYST

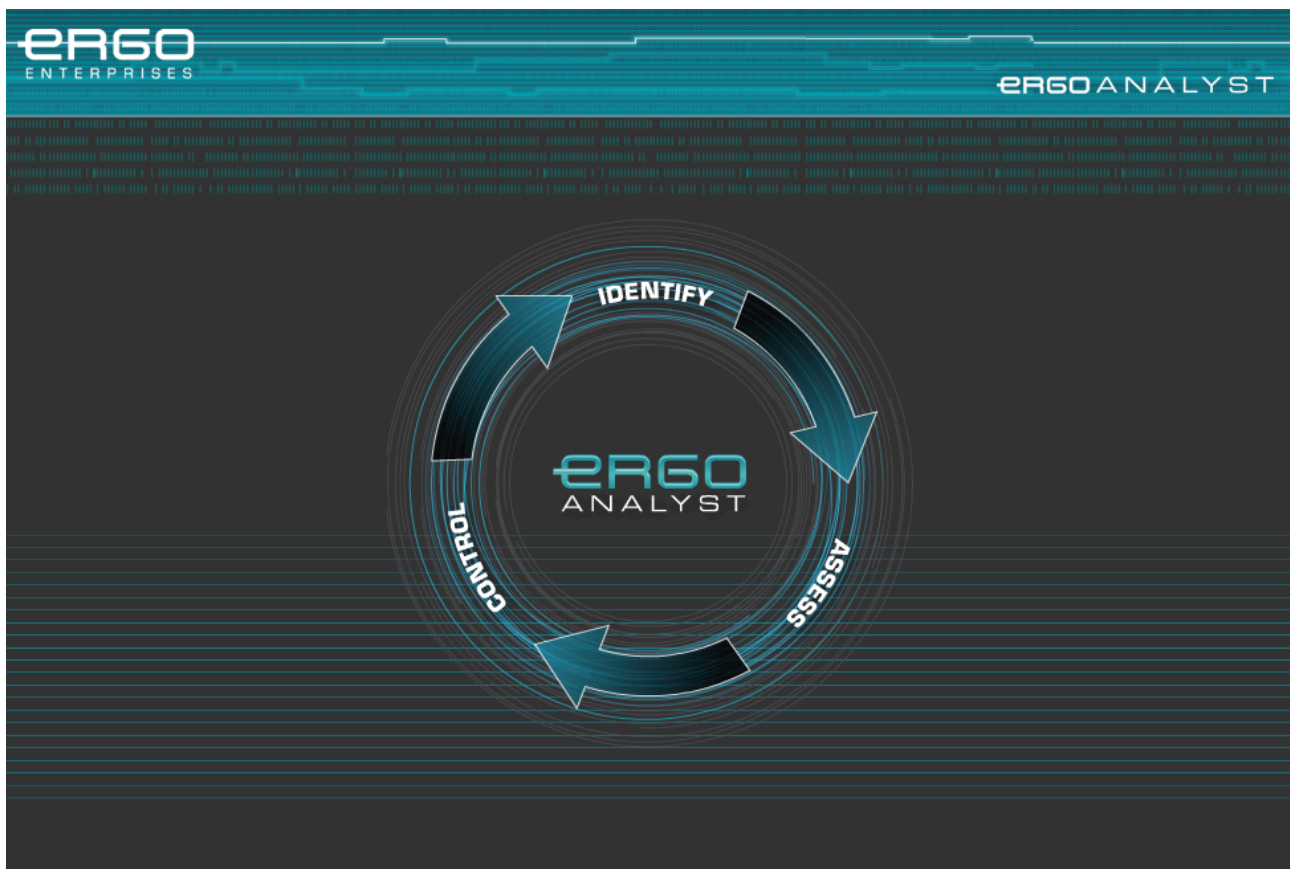


Figure 1: ErgoAnalyst splash screen

ErgoAnalyst is a software application which assists the implementation and documentation of a participative ergonomics process for reducing injury risks associated with manual tasks described in the “Procedure for Managing Manual Tasks Injury Risks”¹. The procedure involves: identification of potentially hazardous manual tasks; assessment of the risks associated with these tasks; elimination, or control of the risks through substitution or design controls, supplementary administrative controls; and documentation of the potential control measures, implemented control measures, and residual risks. ErgoAnalyst utilises the risk assessment tool described in Appendix B of the procedure as a method of evaluating the risks associated with the potentially hazardous tasks before and after the implementation of design controls.

ErgoAnalyst is a web-based application offered as “software as a service”, with all information stored on an ErgoEnterprises server. This has the advantage that the information describing the all of the potentially hazardous tasks identified, the risk assessments, the potential control measures and implemented control measures, across the whole organisation are stored in a central on-line database which is accessible from any internet connected computer. This database provides a powerful tool for tracking progress and sharing risk assessments, as well as potential and implemented controls.

¹ Burgess-Limerick, R. (2008). *Procedure for Managing Injury Risks Associated with Manual Tasks*. <http://burgess-limerick.com/download/manualtasksprocedure.pdf>

The application is structured around four sections. The Training tab provides access to a short (10 minute) site training video which provides manual task hazard awareness information suitable for use in employee induction training. Some organisations prefer an industry specific version of the video to be created.

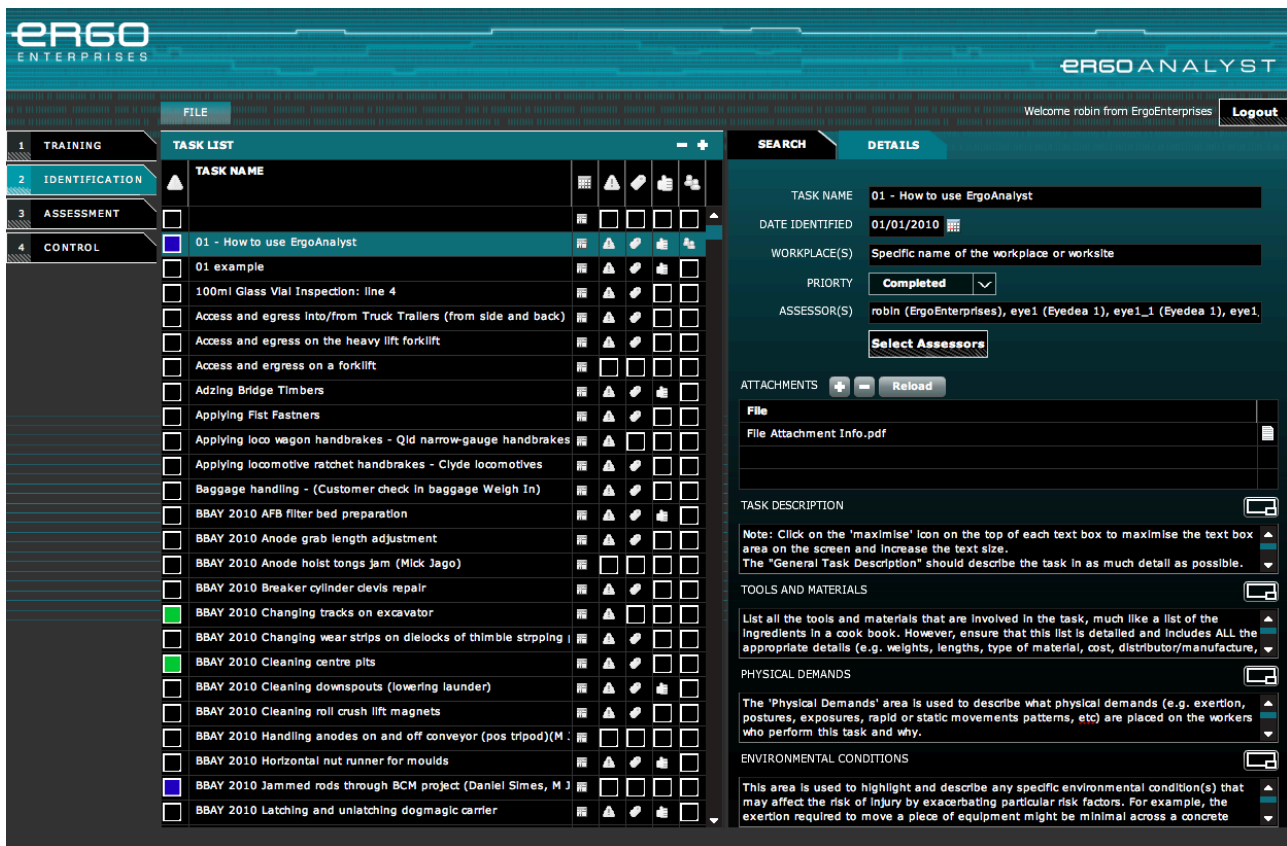


Figure 2: Task identification screen

The “Identification” screen illustrated in Figure 2 is the window into all potentially hazardous manual tasks which have been identified across the organisation. New tasks are added to the database via this tab, and information describing the tasks (including images or other documents) are uploaded or entered here. A Search function provides a means of filtering the tasks displayed by, for example: assessor, date identified, task name, or risk levels assessed. Once a task has been created and described, or chosen from the existing tasks, attention turns to the “Assessment” tab (Figure 3).

The environmental characteristics related to the task, and physical task characteristics for each body region (shoulders, arms, back, and legs) are entered via check boxes and drop down menus in the “hazard profile” section in the left section of the assessment tab. The resulting risk profiles for acute and cumulative injury risk are displayed on the right side of the tab. Having assessed the risks associated with the task, and if action is indicated, attention turns to the “Control” tab (Figure 4).

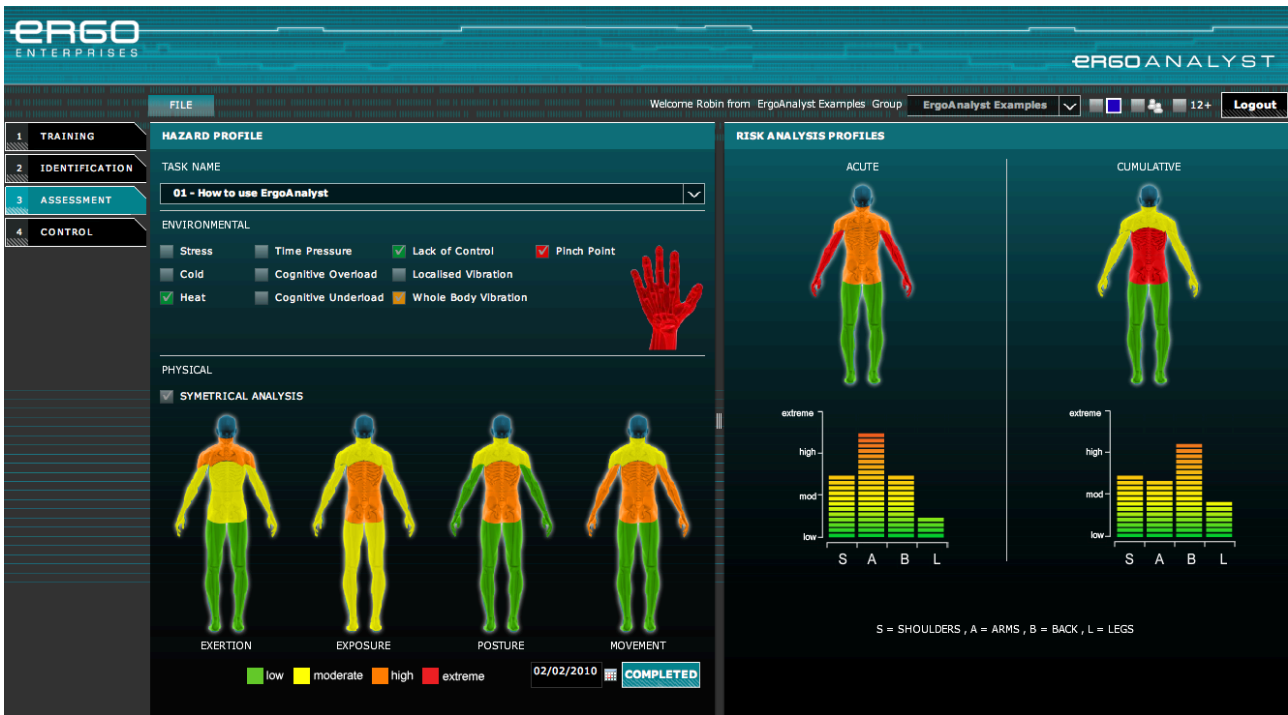


Figure 3: Assessment tab completed risk assessment



Figure 4: Control tab showing before and after risk profiles for a hypothetical proposed control measure

The control tab allows information about multiple control options to be entered. For each option, the proposed control may be assessed for its likely consequences for the physical and environmental tasks characteristics, so that the potential risk reduction may be assessed, and compared with alternate control options. When a control option is implemented, the control tab allows the tasks characteristics following the implementation of the control measure to be described and the residual risk assessed.

A variety of tools are provided to assist in the management of the process, including screens for developing action plans identifying responsible persons, printable reports for each task (Figure 5), and reports detailing the progress of all potentially hazardous tasks identified listing dates at which the tasks were identified, the risk was assessed, controls were developed, and implemented.

ErgoAnalyst Report: 01 - How to use ErgoAnalyst

Risk Analysis: 01 - How to use ErgoAnalyst

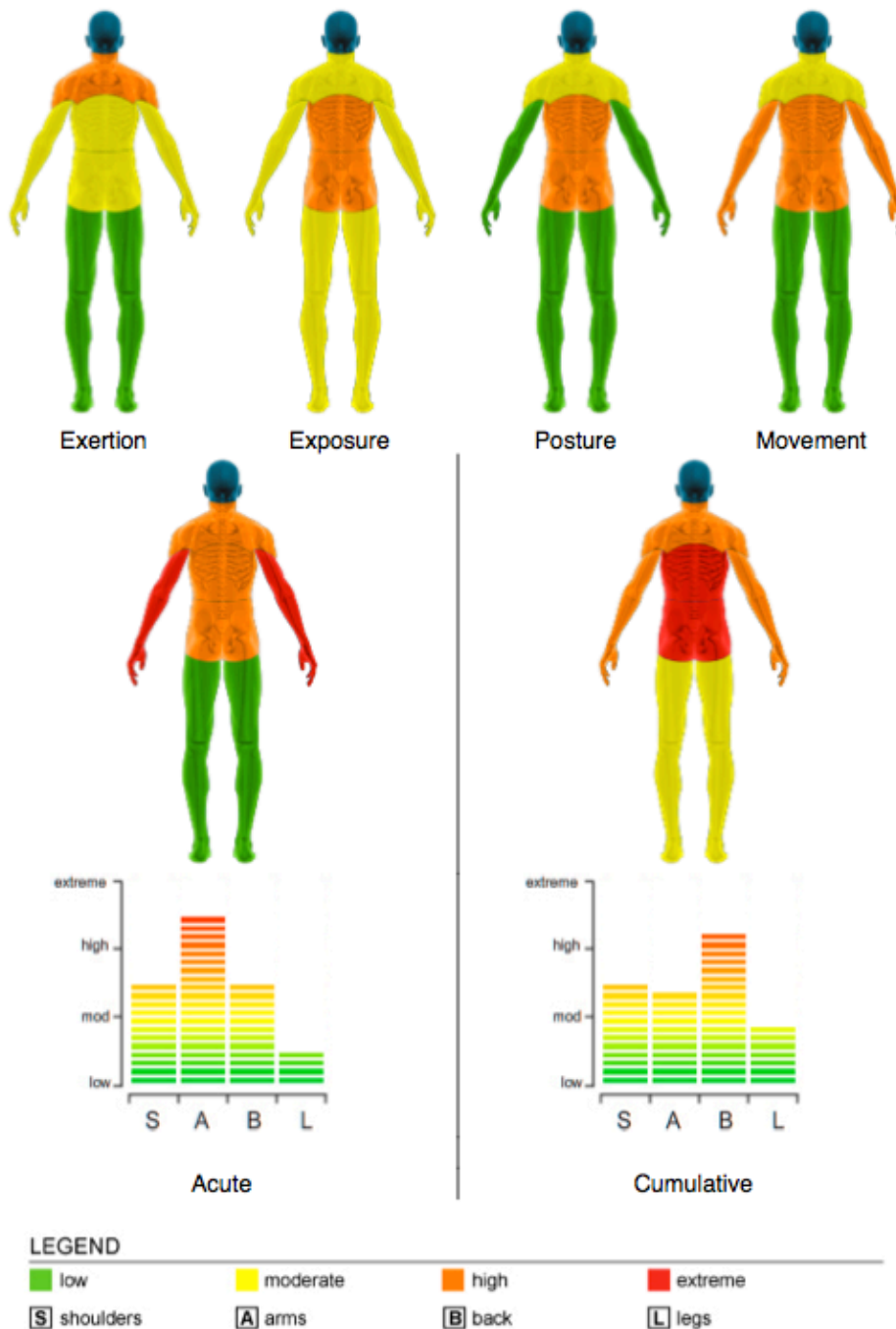


Figure 5: Extract of report produced by ErgoAnalyst for the task characteristics and risk assessment conducted for a hypothetical task

For further information, please [email](#) or call:

Dr Gary Dennis BHSc (Hons) PhD CPE
Managing Director



M +61 410 629 626 P +61 7 5668 3422
PO Box 5432 Q Supercentre, Mermaid Waters 4218, Qld Australia
E gdennis@ergoenterprises.com.au
www.ergoenterprises.com.au